

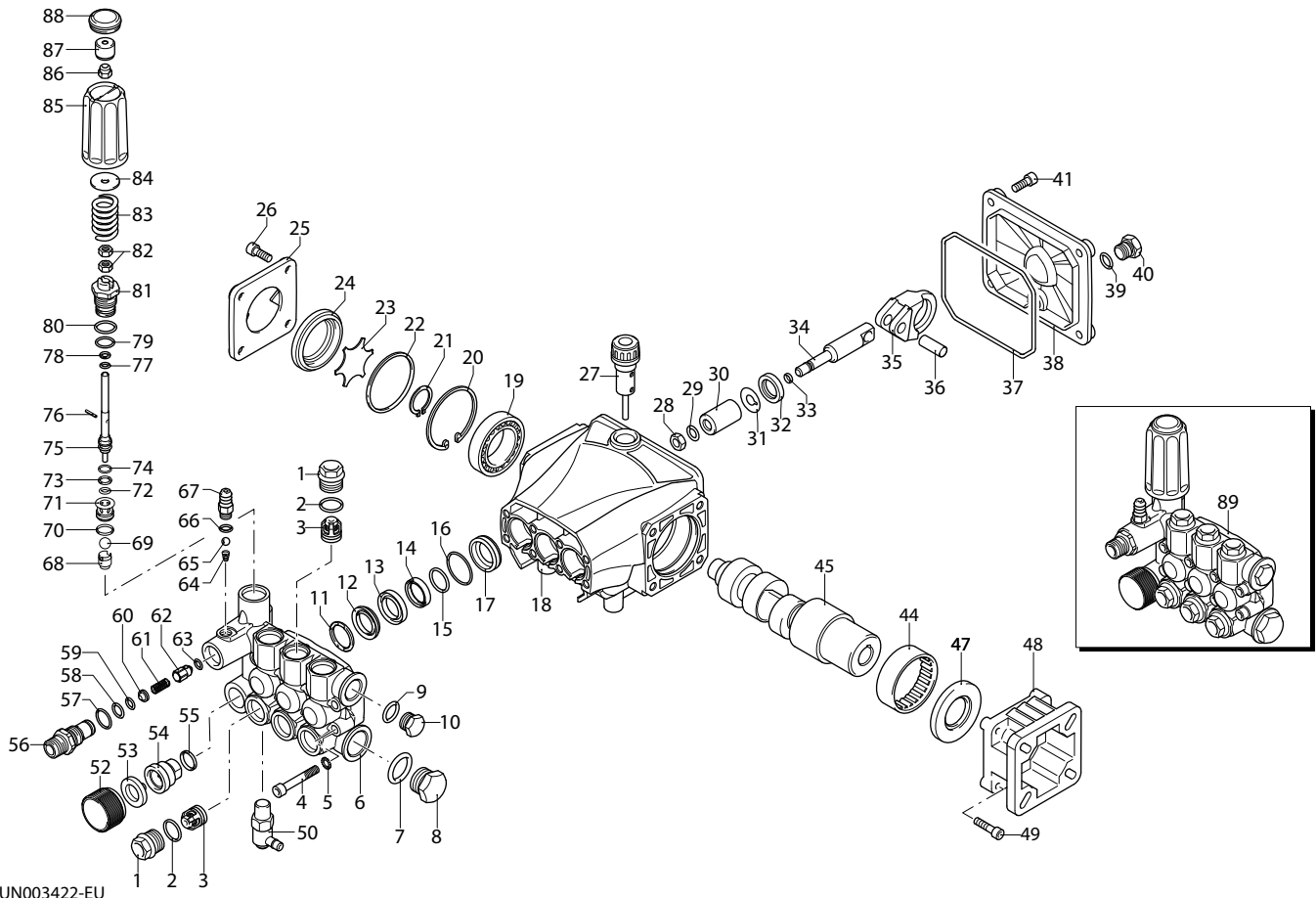
RCV

VERSION

D

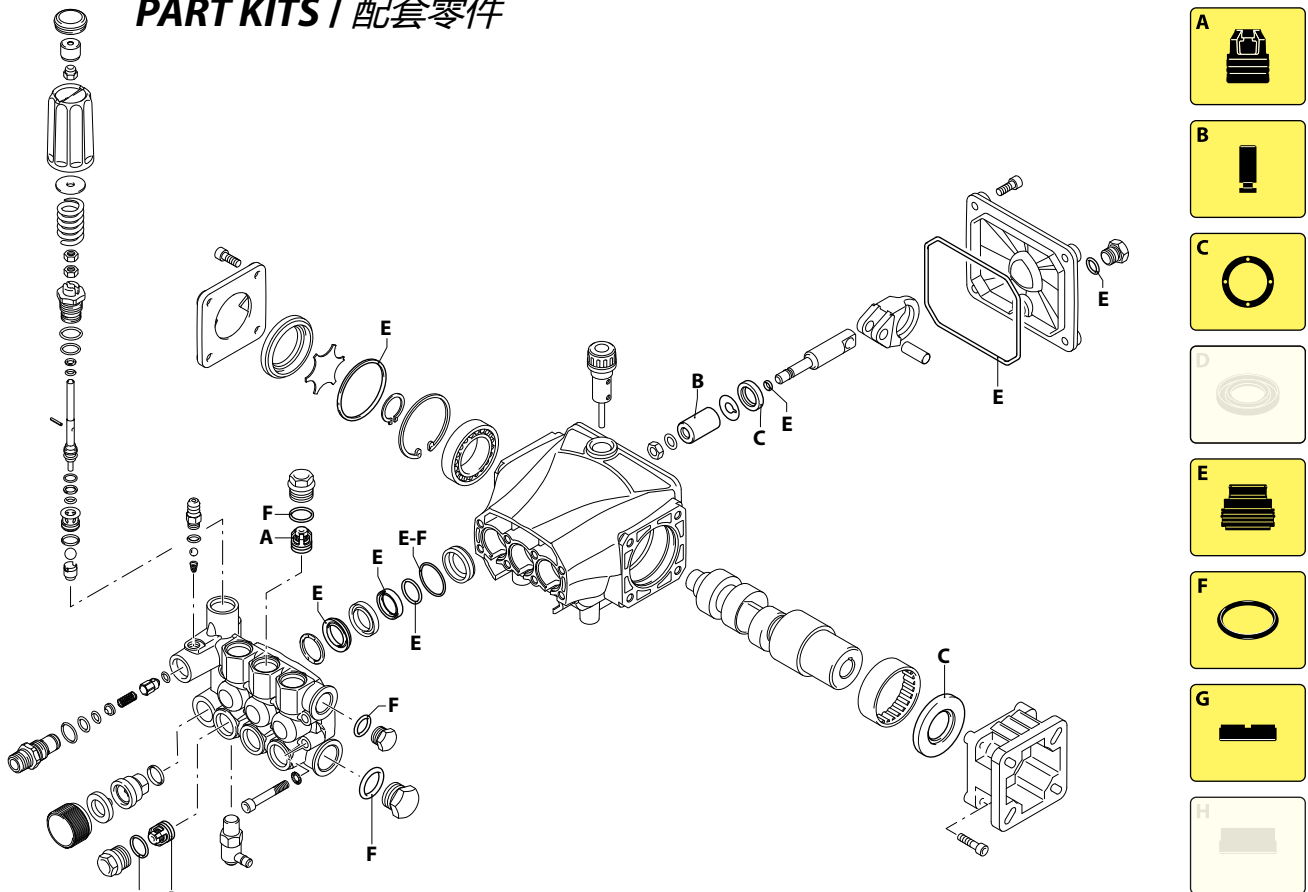
3400rpm

Ø 3/4"



UN003422-EU

PART KITS / 配套零件



UN003423-JU

320 Series

RCV 3400 rpm D version ø 3/4" mm + F7

2.5 G25

3 G25

3.5 G25



Pos. 序号	Cod. 编号	Description	描述	Qt 数量	Note 备注	Pos. 序号	Cod. 编号	Description	描述	Qt 数量	Note 备注
1	3200110	Plug	塞阀	6	☉ C=24,5Nm	45	3201170	Shaft	marcato 9	1	○
2	1200690	O-ring	Ø 15,6x1,78	6	☒		3200350	Shaft	marcato 8	1	●
3	2769050	Complete valve	276单向阀成品	6			3200340	Shaft	marcato 7	1	▲
4	800410	Screw	TCEI M6x40	8	C=10,4Nm	47	480671	Oil seal		1	(a)
5	1381550	Washer	SCHNORR 垫片	8		48	1320050	Flange	F7	1	
6	3200930	Head	泵头	1		49	1200430	Screw	TCEI M6x16	4	C=10,4Nm
7	180101	O-ring	Ø 17,5x2	1	☒	50	2761380	Valve		1	
8	820361	Plug	1/2" G ottone	1	C=40Nm	52	2840270	Fitting		1	
9	740290	O-ring	Ø 14x1,78	1	☒	53	1266330	Filter		1	
10	1980740	Plug	3/8" G ottone	1	C=25Nm	54	2841230	Fitting		1	☉ C=25Nm
11	2760220	Ring	appoggio Ø15	3		55	2840890	O-ring	Ø 14x2	1	☉ C=40Nm
12	1342761	Gasket	水封	3	☒	56	2760230	Injector		1	☉ C=40Nm
13	3200160	Piston guide	Ø 15	3		57	394280	O-ring	Ø 12,42x1,78	1	☒
14	3200690	Gasket	Ø 15	3	☒	58	2760270	O-ring	Ø 12x1	1	☒
15	3200700	Ring	antiestrusione	3		59	1470210	O-ring	Ø 9x1	1	
16	770590	O-ring	Ø 21,95x1,78	3	☒	60	2760120	Insert		1	
17	3200150	Piston guide	Ø 15	3		61	2760200	Spring		1	
18	3200010	Pump body	泵体	1		62	2760130	Shutter		1	
19	1780490	Bearing	球轴承	1		63	1460430	O-ring	Ø 4x2,5	1	
20	1260790	Ring	seeger Øi 52	1		64	1560520	Spring		1	
21	1780550	Ring	曲轴卡簧	1		65	1250280	Ball		1	
22	395081	O-ring	Ø 47,30x2,62	1	☒	66	480480	O-ring	Ø 4,48x1,78	1	☒
23	3200090	Plate	金属片	1		67	1982520	Hose tail	Ø 8	1	☉ C=4Nm
24	3200080	Level gauge	油标	1		68	3200560	Guide		1	
25	3200070	Support	泵体边盖	1		69	3200590	Ball		1	
26	1200430	Screw	TCEI M6x16	4	C=10,4Nm	70	770140	O-ring	Ø 11,11x1,78	1	
27	880130	Plug	油尺	1		71	3200550	Seat		1	
28	1260110	Nut	M8	3	☉ C=12Nm	72	660191	O-ring	Ø 6,07x1,78	1	☒
29	1260100	Washer	活塞垫圈	3		73	1080401	Ring	antiestrusione	1	
30	1260120	Piston	Ø 15	3		74	480560	O-ring	Ø 6,75x1,78	1	☒
31	1260091	Plate	分隔碟	3		75	3200510	Piston		1	
32	1260460	Oil seal	油封	3		76	3200620	Pin		1	
33	480480	O-ring	Ø 4,48x1,78	3	☒	77	770090	O-ring	Ø 5,28x1,78	1	☒
34	3200060	Piston	di guida	3		78	3200540	Ring	antiestrusione	1	
35	3200040	Connecting-rod	连杆	3	☐	79	394280	O-ring	Ø 12,42x1,78	1	☒
36	1780050	Pin	柱塞销子	3		80	1200690	O-ring	Ø 15,6x1,78	1	☒
37	2760280	O-ring	Ø 101,27x2,62	1		81	3200530	Piston guide		1	
38	3200030	Cover	泵体后盖	1		82	1980300	Nut	M6	2	
39	820510	O-ring	Ø 10,82x1,78	1		83	3201340	Spring		1	
40	880581	Plug	1/4" G	1	C=20Nm	84	3200600	Washer		1	
41	3200220	Screw	TCEI 6x16	4	C=8Nm	85	3200480	Knob		1	
44	1321190	Bearing	滚针轴承	1		86	3000170	Nut	M6	1	
						87	3200520	Bushing		1	
						88	3200500	Plug		1	
						89	3209204	Head assembly		1	

PART KITS - 配套零件

A=KIT 2186 valves 单向阀		B=KIT 42475 pistons 柱塞		C=KIT 42474 oil seals 油封		E=KIT 42476 water seals 水封	
Pos. 序号	Q.ty 数量	Pos. 序号	Q.ty 数量	Pos. 序号	Q.ty 数量	Pos. 序号	Q.ty 数量
3	6	30	3	32	3	12	3
				47	1	14	3
						15	3
						16	3

F=KIT 42470 O-Rings O型圈				G=KIT 2191 support rings 支撑环			
Pos. 序号	Q.ty 数量	Pos. 序号	Q.ty 数量	Pos. 序号	Q.ty 数量	Pos. 序号	Q.ty 数量
2	6	39	1	11	3		
7	1						
9	1						
16	3						
22	1						
33	3						
37	1						

SIMBOLOGIA - 标记

○ For / 用于 RCV 2.5 G25 ● For / 用于 RCV 3 G25 ▲ For / 用于 RCV 3.5 G25

- C Tightening torque tolerance 0÷10% / 拧紧力矩公差 0÷10%
- ☉ Screw with Loxeal 55-14 / 用 Loxeal 55-14 螺丝
- ☒ Lubricate with grease Molykote PG54 / 用 Molykote PG54 润滑
- ☐ Lubricate with grease Molykote G807 / 用 Molykote G807 润滑
- (a) Fit the seal with tool code nr. 1781000 / 用 nr. 1781000 工具进行密封

Oil - 机油	
Type / 类型	Quantity / 数量
SAE 15W40	0,26 Kg